

Filter

Custom plot style

2D scatter plot

X data Log X

firingRate

Y data Log Y

peakVoltage

Z data Log Z

troughToPeak

Marker size Log size

peakVoltage

Group data & filters

cell-type

Color groups

By group data

Display settings

- Unknown (1)
- Pyramidal Cell (124)
- Narrow Interneuron (21)
- Wide Interneuron (5)

Layout

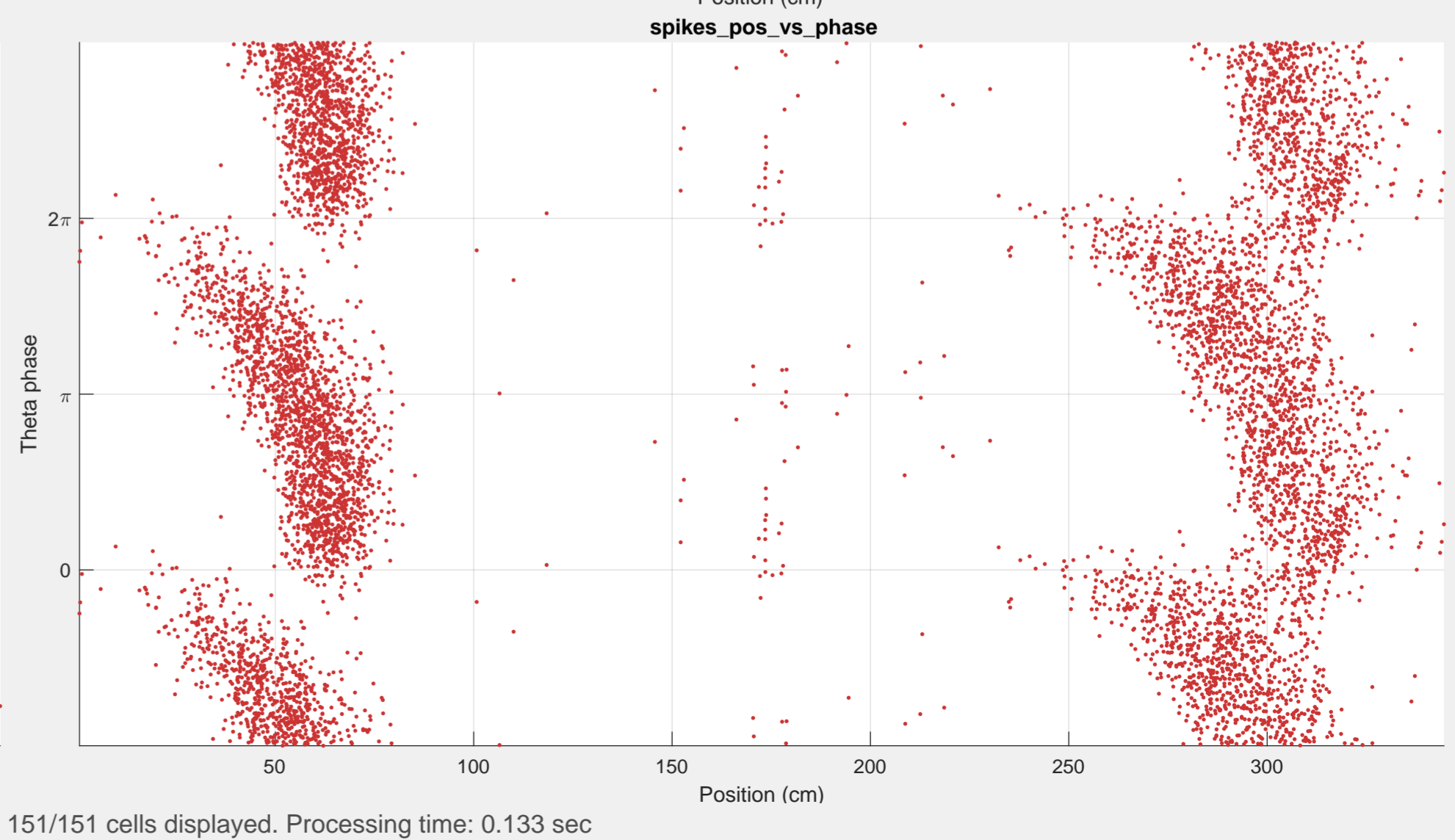
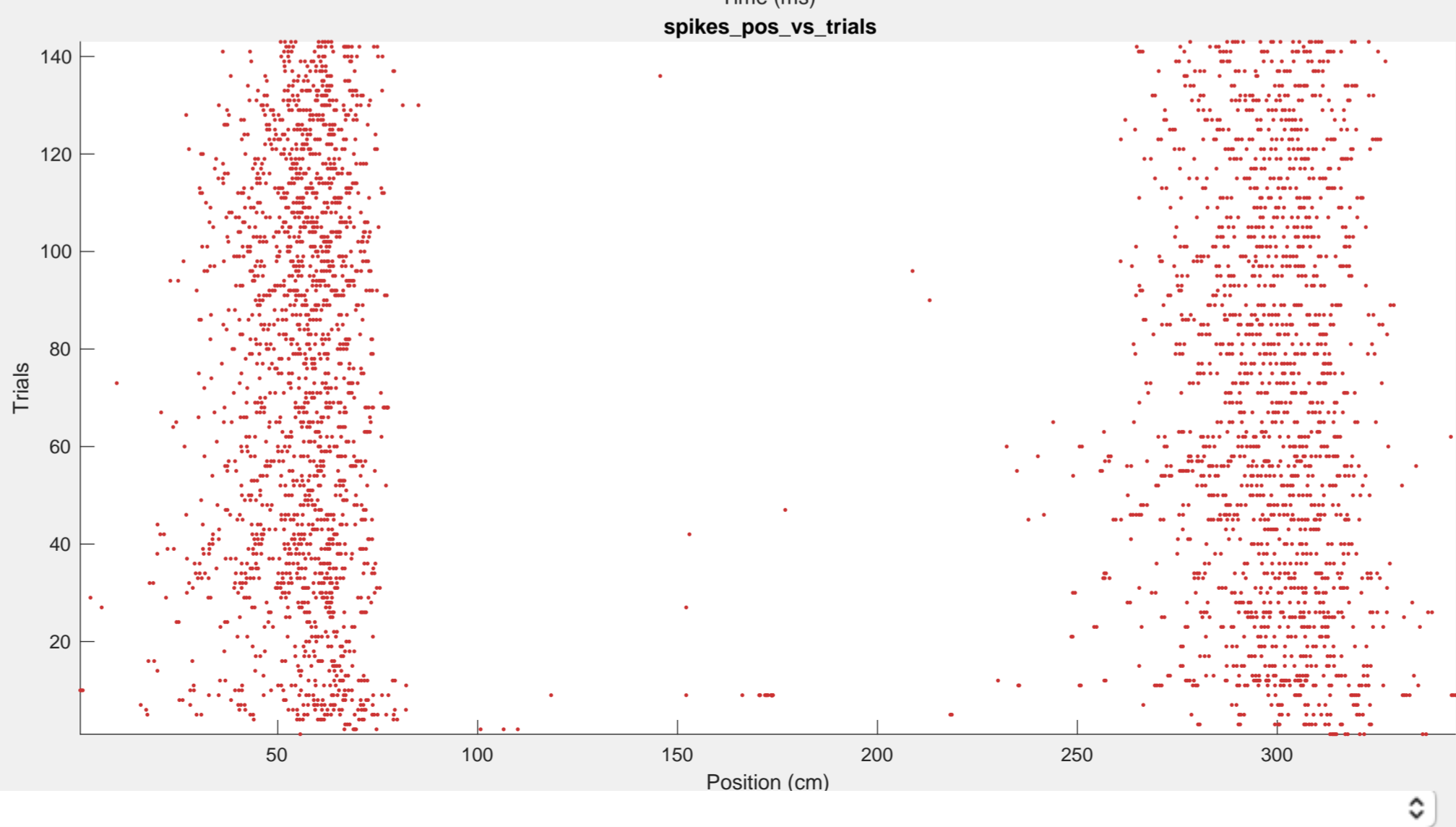
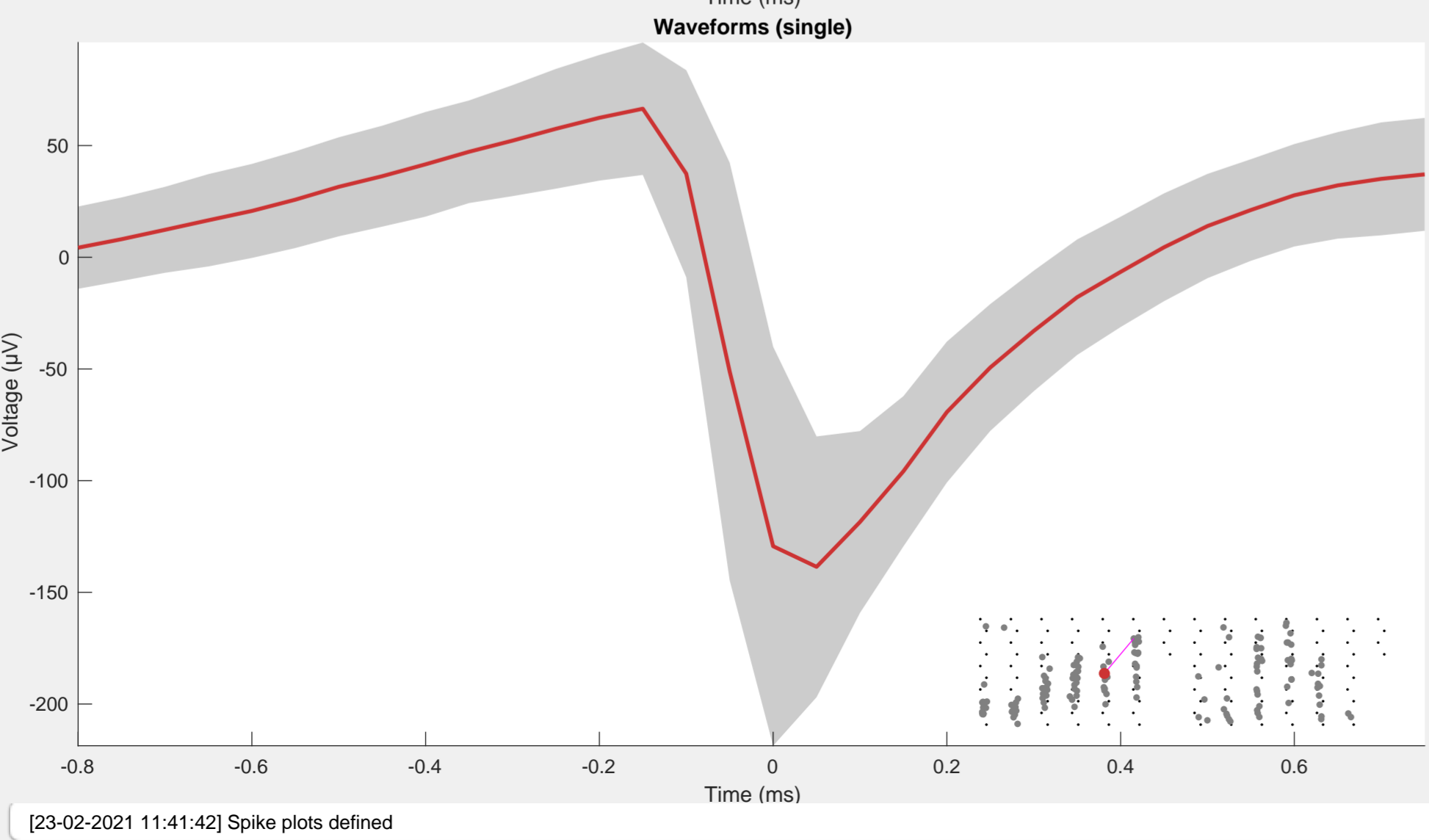
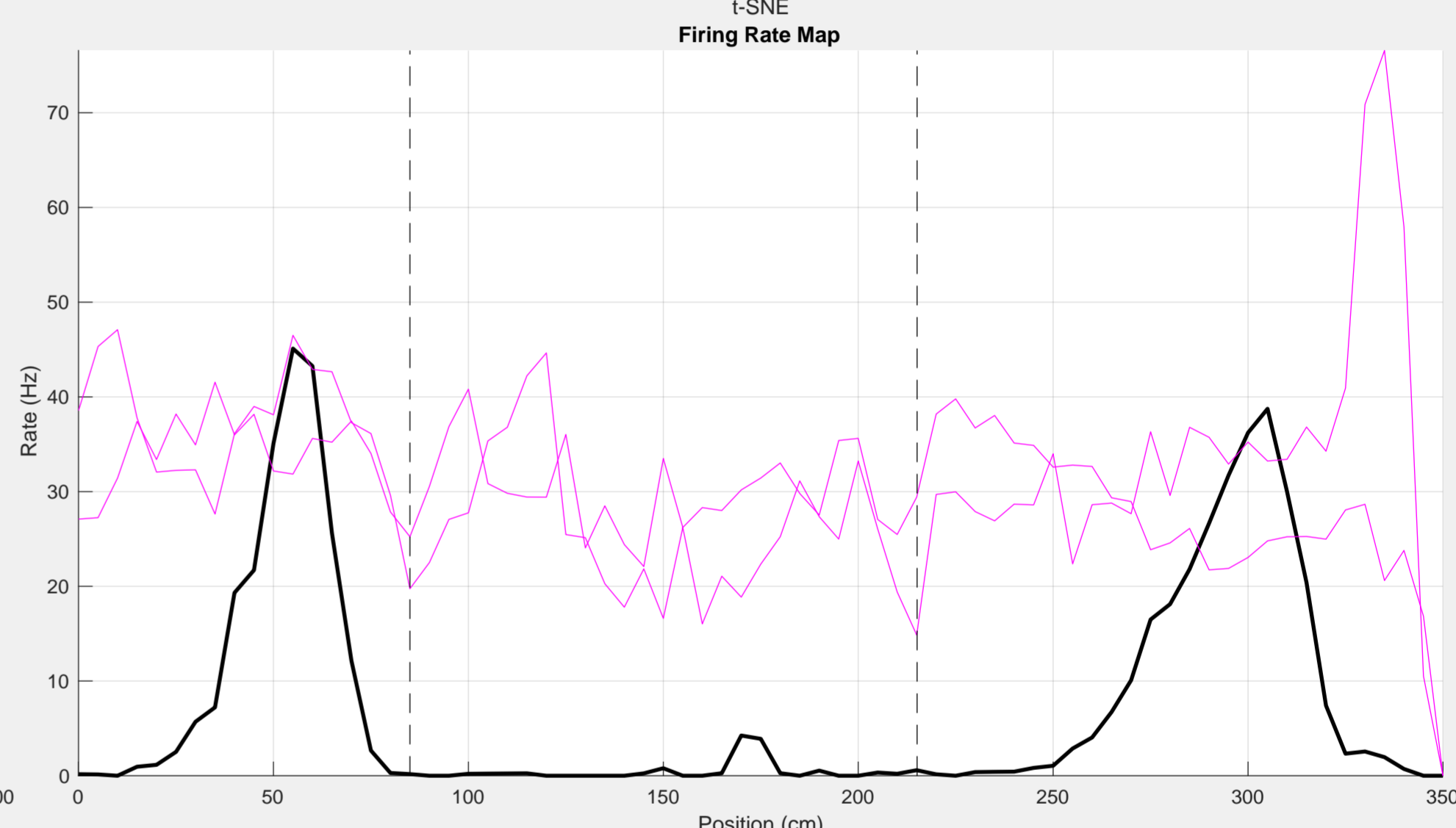
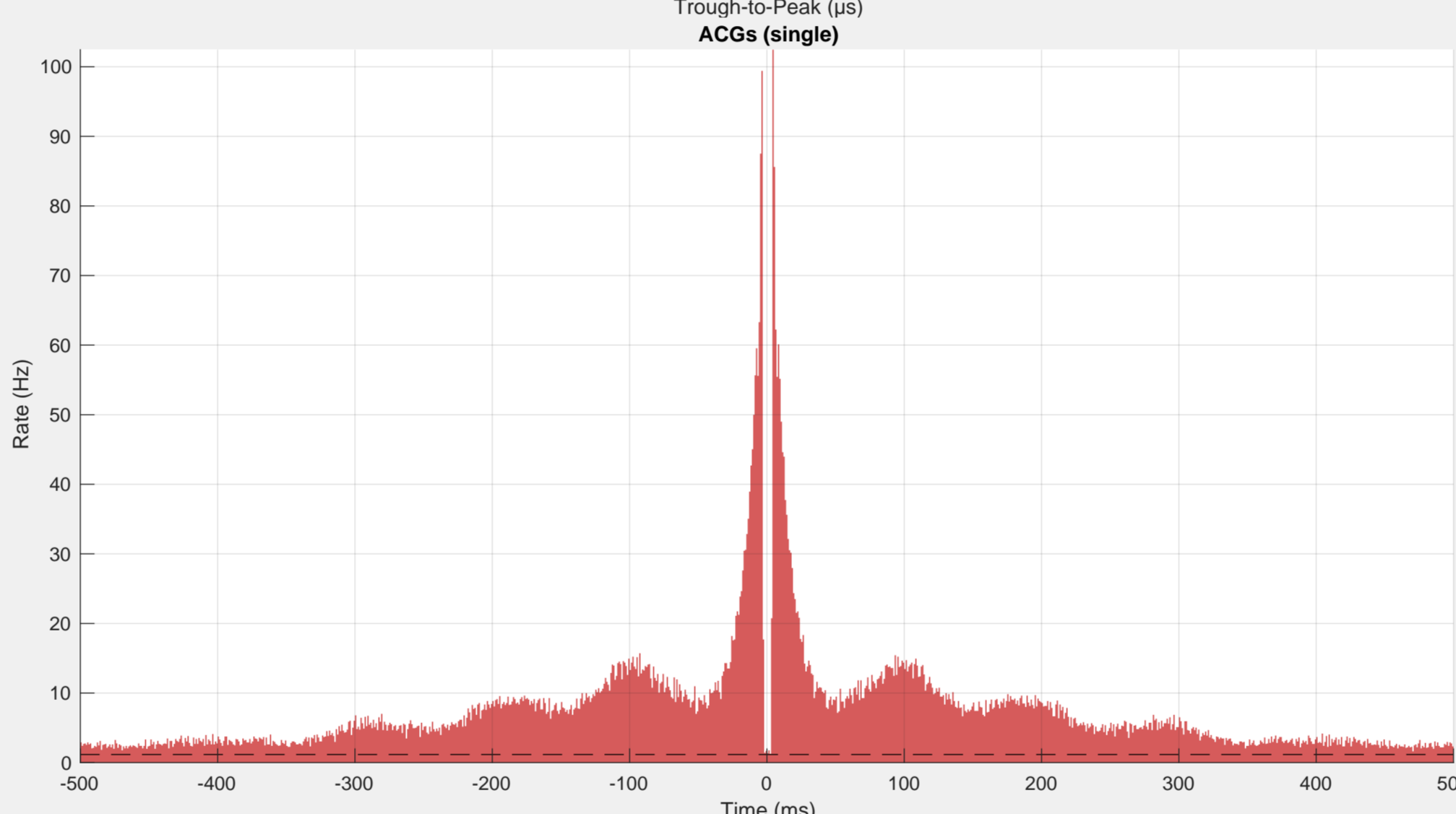
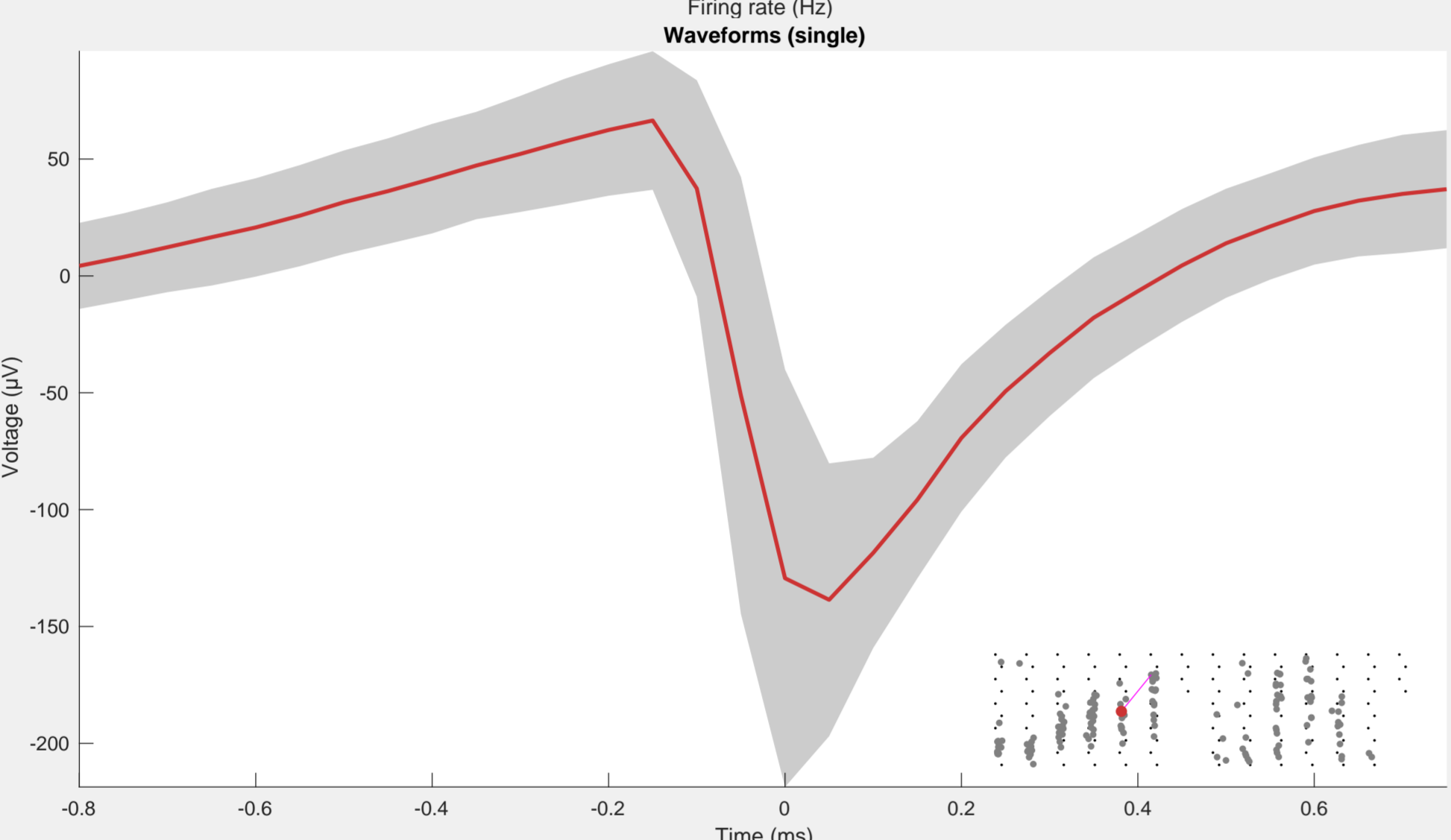
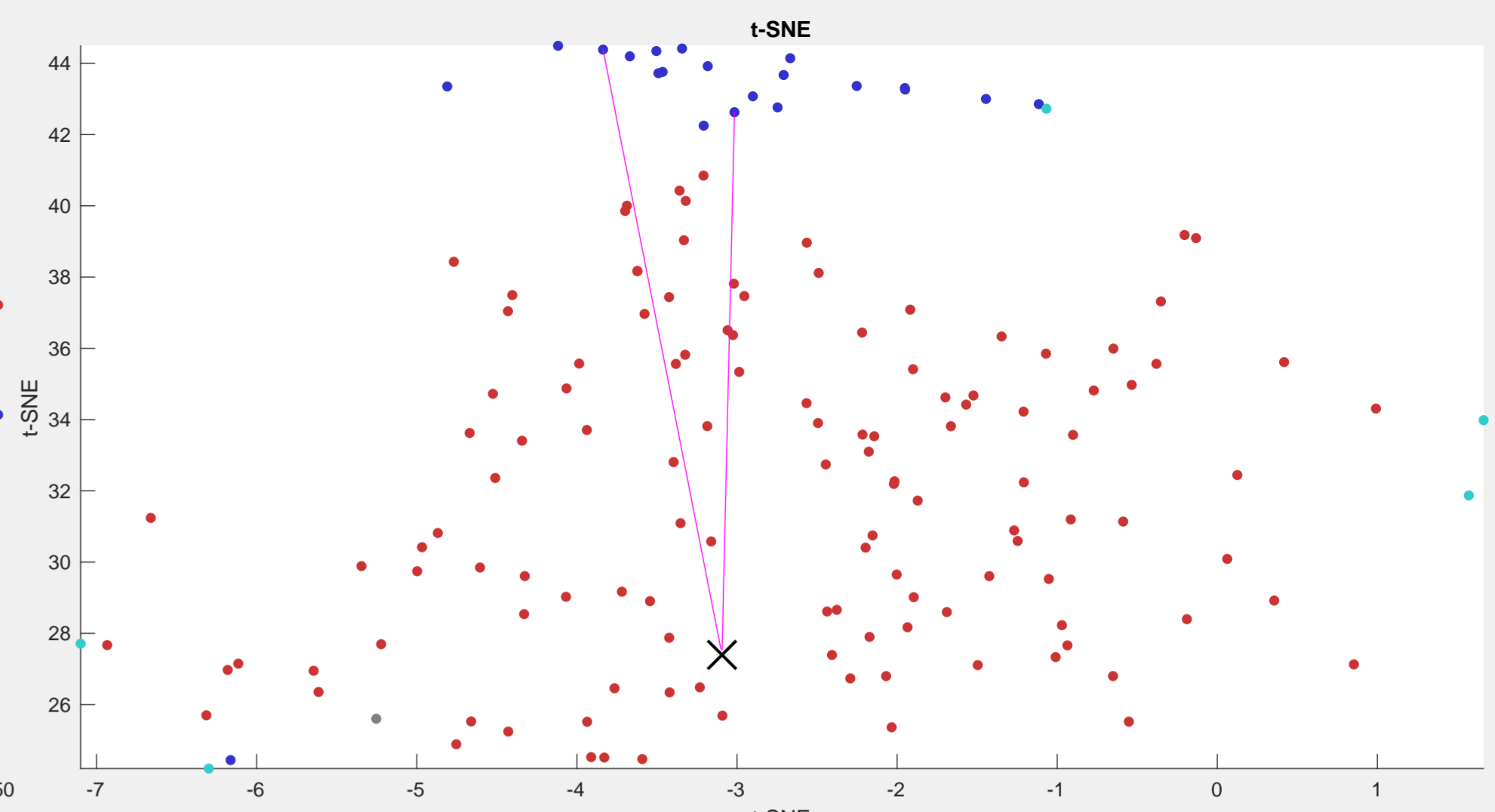
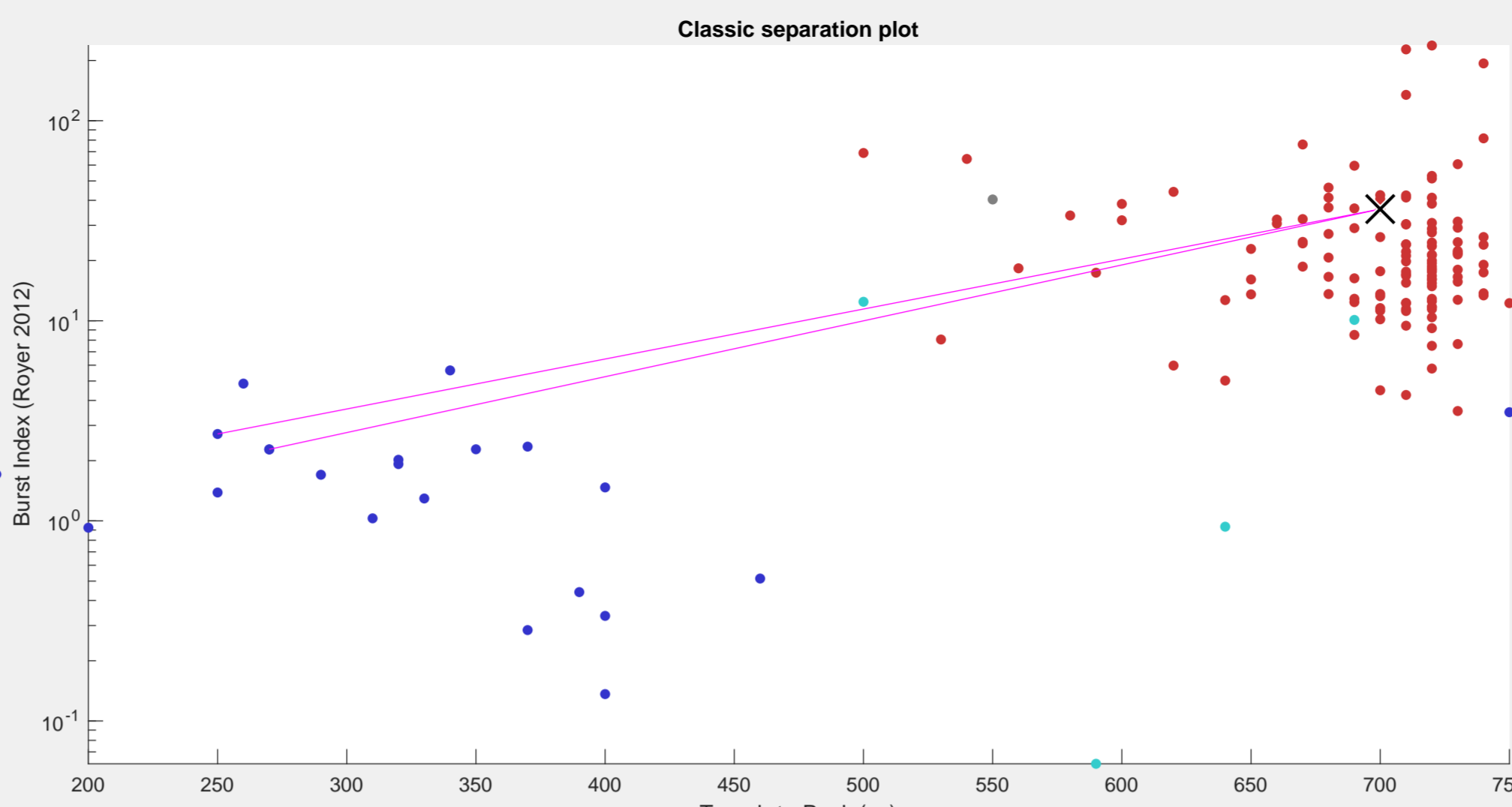
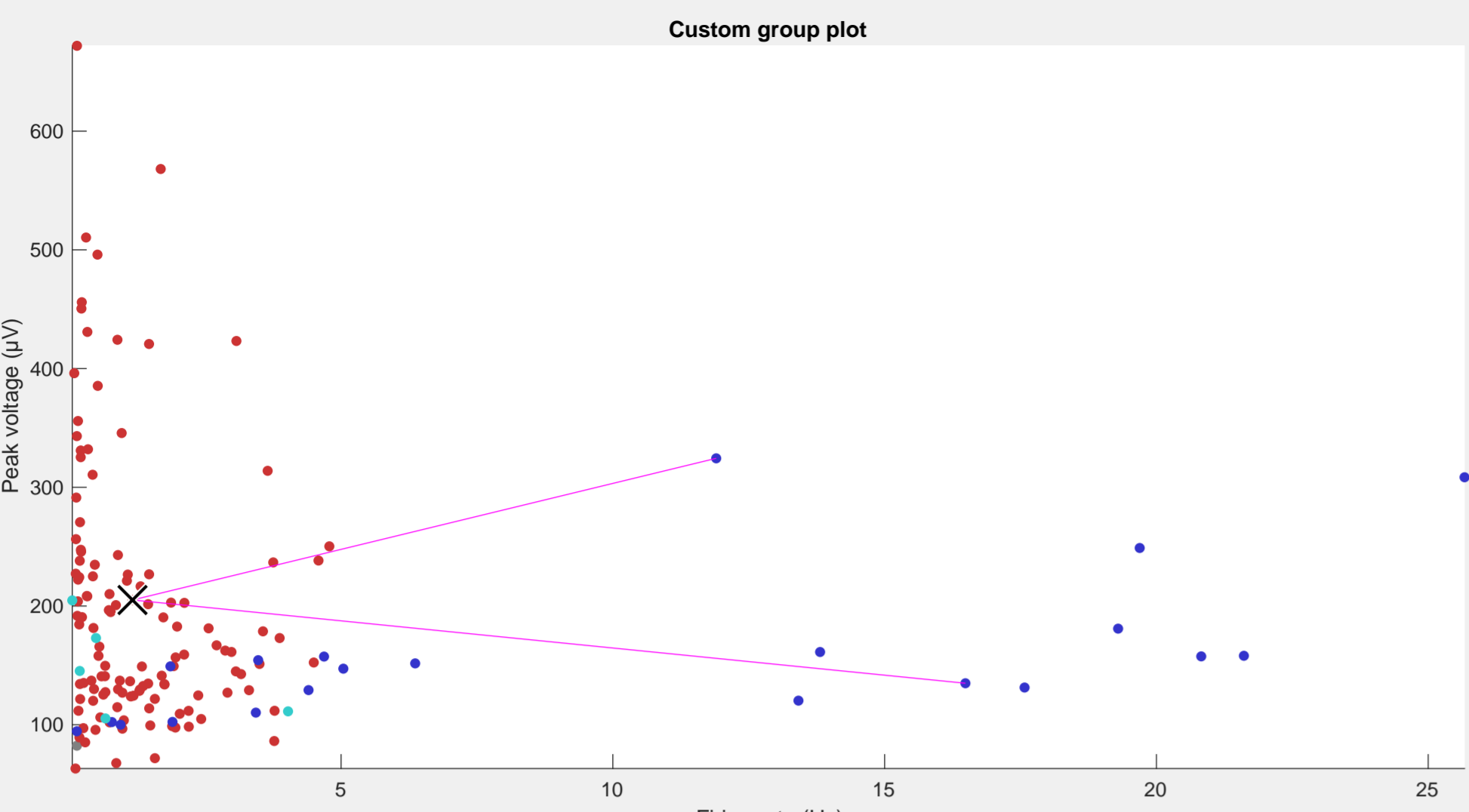
GUI 3+6

- Waveforms (single)
- ACGs (single)
- firingRateMaps_firi...
- Waveforms (single)
- spikes_pos_vs_tri...
- spikes_pos_vs_p...

Legend

Selected cell

- Unknown (1)
- Pyramidal Cell (124)
- Narrow Interneuron (21)
- Wide Interneuron (5)
- Outbound excitation



Navigation

< GoTo >

Cell classification

- Unknown
- Pyramidal Cell**
- Narrow Interneuron
- Wide Interneuron
- New Cell-type

O Polygon Actions

Region: CA1

Label:

Tags D/S

Bad Good

InverseSpike Noise

test + tag

Metrics

UID	92
ab_ratio	-0.29242
acg_asymptote	6.67615
acg_c	66.82418
acg_d	0.8757
acg_fit_rsquare	0.98586
acg_h	88.6793
acg_refrac	4.3667
acg_tau_burst	0.49428
acg_tau_decay	11.58282
acg_tau_rise	0.39483
animal	MS22
burstIndex_Dou...	2.1851
burstIndex_Miz...	0.39626
burstIndex_Roy...	36.15989
cellID	92
cluiD	2624
cooling_modula...	0.0333333
cooling_modula...	-0.7
cooling_modula...	0.26454
cv2	1.0357
electrodeGroup	5
entryID	31915
firingRate	1.1631
firingRateGiniCo...	0.38201
firingRateISI	55.7103
firingRateInstabil...	0.24498
firingRateStd	0.70699
isolationDistance	33.14761
IRatio	2.24164
maxWaveformCh	30
maxWaveformCh1	31
maxWaveformC...	47
peakVoltage	205.0712
peakVoltage_ex...	24.2533
peakVoltage_ex...	2.9238
placeCell	1
placeFieldsCount	2
polarity	-1.0744
population_mod...	1.2261
refractoryPeriod...	3.18629
ripples_modulati...	2.5361
ripples_modulati...	0
ripples_modulati...	6.9302e-...
sessionID	9558