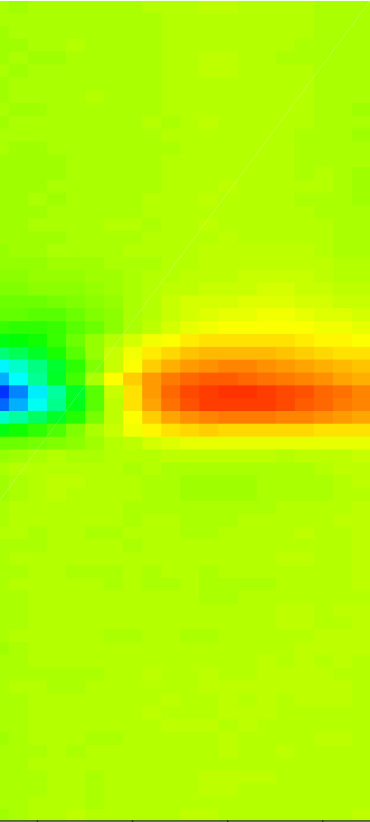
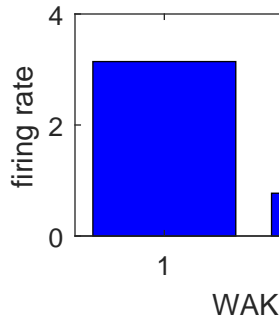
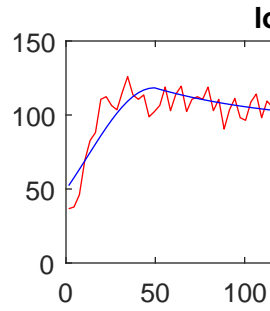
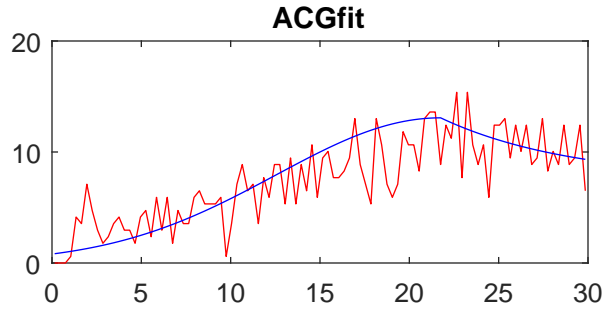


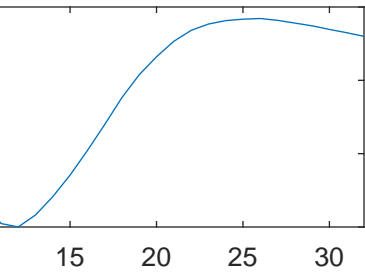
all_YMV₂--waveEwithoutWI-unitID-33



15 20 25 30

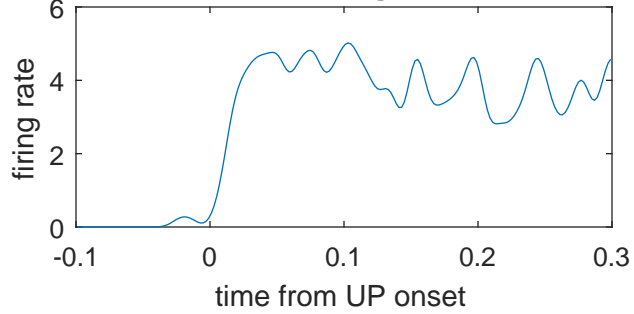


waveform



15 20 25 30

UP trig



unitID: 33
 Norm Depth: 389
 cell type: waveEwithoutWI
 waveE:1 waveI:0 ccgE:0 ccgI:0
 VGAT:0 PV:0
 dwnactive:0 acgWI:0
 ACGfit: 1886 6 25 7
 longACGfit: 313 25 23 94
 TP latency: 0.71